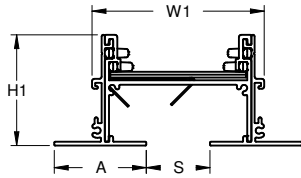
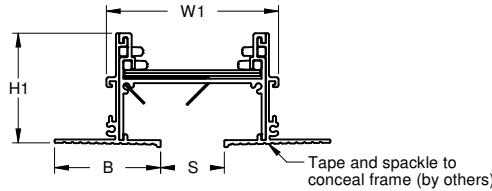


FRAME STYLE:

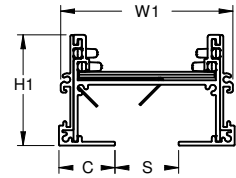
CF - CUSTOM FLOW



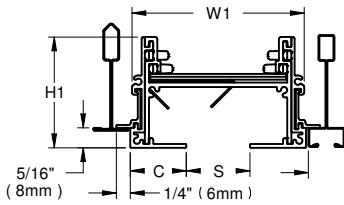
EF - Exposed Frame



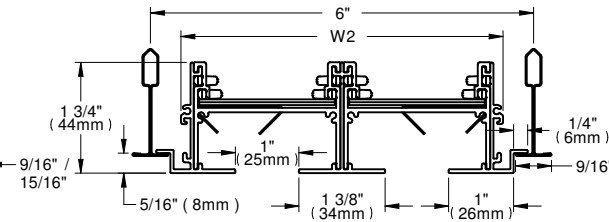
CMF - Concealed Mud Frame
• SM application only



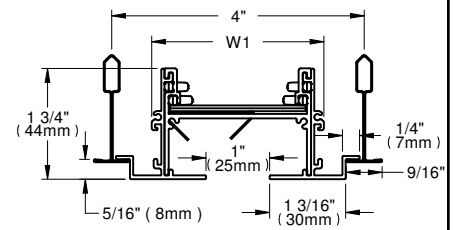
FM - Flush Mount



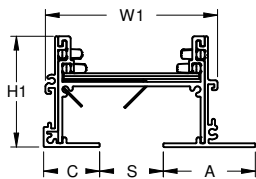
TG916
9/16" Tegular or Bolt Slot T-Bar
 TG1516
15/16" Tegular T-Bar
• LI application only



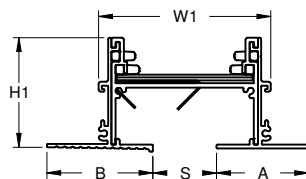
TZ-6 - 6" TechZone Module
• LI application only
• 1" slot width only
• 2 slot only



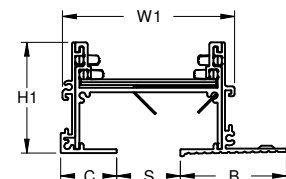
TZ-4 - 4" TechZone Module
• LI application only
• 1" slot width only
• 1 slot only



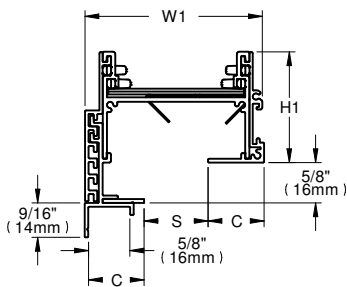
FM-EF
Flush Mount - Exposed (Hybrid Frame)



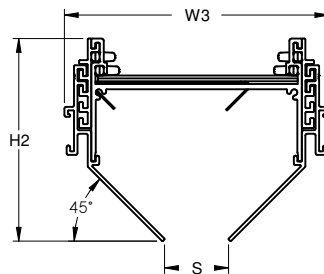
CMF-EF
Concealed Mud-Exposed (Hybrid Frame)



FM-CMF
Flush Mount - Concealed Mud (Hybrid Frame)



OFS - 5/8" Offset Frame
• SM application only
• 1 slot only

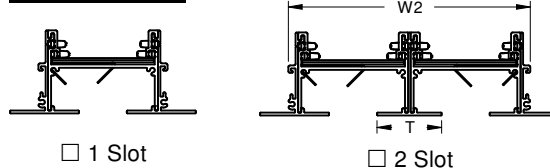


VF - V-Frame
• SM application only
• 1 slot only

MAX. SECTION LENGTH:

- 96" (2438mm)
- 120" (3048mm)

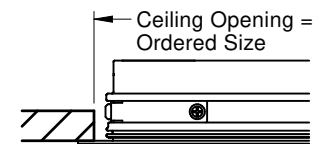
SLOT QUANTITY:



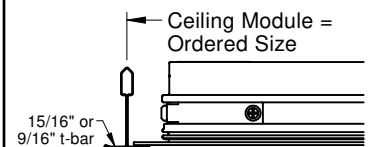
1 Slot

2 Slot

APPLICATION:



SM - Surface Mount Drywall Application



LI - Tee Bar Lay-in Application

ALL METRIC DIMENSIONS () ARE SOFT CONVERTED. IMPERIAL DIMENSIONS ARE CONVERTED TO METRIC AND ROUNDED TO THE NEAREST MILLIMETER.

PROJECT:

ENGINEER:

CUSTOMER:

SUBMITTAL DATE:

SPEC. SYMBOL:



mg
267996

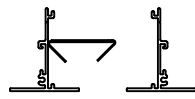
CF
CUSTOM FLOW
LINEAR SLOT DIFFUSER

2023/09/12

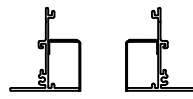
CF - CUSTOM FLOW

Slot Width (S)	A	B	C	H1	W1	W2	T	H2	W3
<input type="checkbox"/> 1" (25mm)	1 7/16" (37mm)	1 11/16" (43mm)	7/8" (22mm)	1 3/4" (44mm)	2 3/4" (70mm)	5 1/16" (129mm)	1 3/8" (35mm)	3 3/16" (81mm)	4 1/8" (105mm)
<input type="checkbox"/> 1 1/2" (38mm)	1 11/16" (43mm)	1 15/16" (49mm)	1 1/8" (29mm)	2" (51mm)	3 3/4" (95mm)	7 1/16" (179mm)	1 7/8" (48mm)	2 15/16" (75mm)	4 1/8" (105mm)
<input type="checkbox"/> 2" (51mm)	1 15/16" (49mm)	2 3/16" (56mm)	1 3/8" (35mm)	2 1/4" (57mm)	4 3/4" (121mm)	9 1/16" (230mm)	2 3/8" (60mm)	3 7/16" (87mm)	5 1/8" (130mm)
<input type="checkbox"/> 2 1/2" (64mm)	2 3/16" (56mm)	2 3/8" (60mm)	1 5/8" (41mm)	2 1/2" (64mm)	5 3/4" (146mm)	11 1/16" (281mm)	2 7/8" (73mm)	3 3/16" (81mm)	5 1/8" (130mm)
<input type="checkbox"/> 3" (76mm)	2 7/16" (62mm)	2 5/8" (67mm)	1 7/8" (48mm)	2 3/4" (70mm)	6 3/4" (171mm)	13 1/16" (332mm)	3 3/8" (86mm)	3 11/16" (94mm)	6 1/8" (156mm)

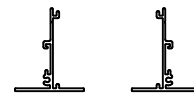
PATTERN CONTROLLER STYLE:



AS - Adjusta Slot



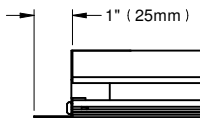
JS - Jet Slot



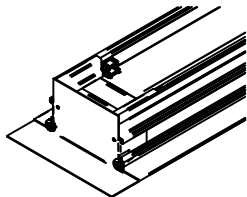
RT - Return

END CONDITIONS:

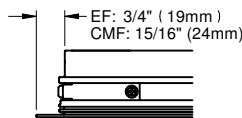
- W - Flanged End
• EF, CMF only



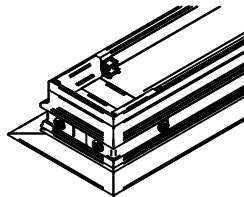
Face Overall Length = Ordered Length + F



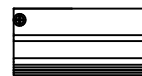
- X - Mitered End
• EF, CMF, FM only



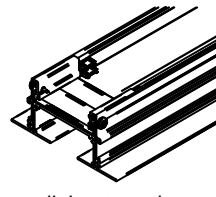
Face Overall Length = Ordered Length + F



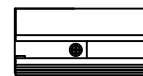
- Y - Open End



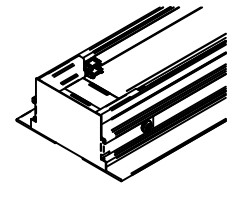
Face Overall Length = Ordered Length + F



- Z - Flush End



Face Overall Length = Ordered Length + F



For splicing together multiple sections

End Condition	SM application			LI application			Hybrid Frames
	CMF	EF	FM, OFS, VF	EF, FM	TG916, TZ-4, TZ-6	TG1516	
WW	+1 1/16" (+27mm)	+1 1/4" (+32mm)	-	-1/4" (-6mm)	-	-	-
WX	+1 1/16" (+27mm)	+15/16" (+24mm)	-	-1/4" (-6mm)	-	-	-
WY	+9/16" (+14mm)	+5/8" (+16mm)	-	-1/8" (-3mm)	-	-	-
WZ	+7/16" (+11mm)	+1/2" (+13mm)	-	-1/4" (-6mm)	-	-	-
XX	+1 1/16" (+27mm)	+11/16" (+17mm)	-1/8" (-3mm)	-1/4" (-6mm)	-	-	-
XY	+9/16" (+14mm)	+3/8" (+10mm)	-1/16" (-2mm)	-1/8" (-3mm)	-	-	-
XZ	+7/16" (+11mm)	+1/4" (+6mm)	-1/8" (-3mm)	-1/4" (-6mm)	-	-	-
YY	0	0	0	0	0	0	0
YZ	-1/8" (-3mm)	-1/8" (-3mm)	-1/16" (-2mm)	-1/8" (-3mm)	-5/16" (-8mm)	-1/2" (-13mm)	-1/8" (-3mm)
ZZ	-1/4" (-6mm)	-1/4" (-6mm)	-1/8" (-3mm)	-1/4" (-6mm)	-5/8" (-16mm)	-1" (-25mm)	-1/4" (-6mm)

ALL METRIC DIMENSIONS () ARE SOFT CONVERTED. IMPERIAL DIMENSIONS ARE CONVERTED TO METRIC AND ROUNDED TO THE NEAREST MILLIMETER.


PROJECT:


ENGINEER:

CUSTOMER:

SUBMITTAL DATE:

SPEC. SYMBOL:



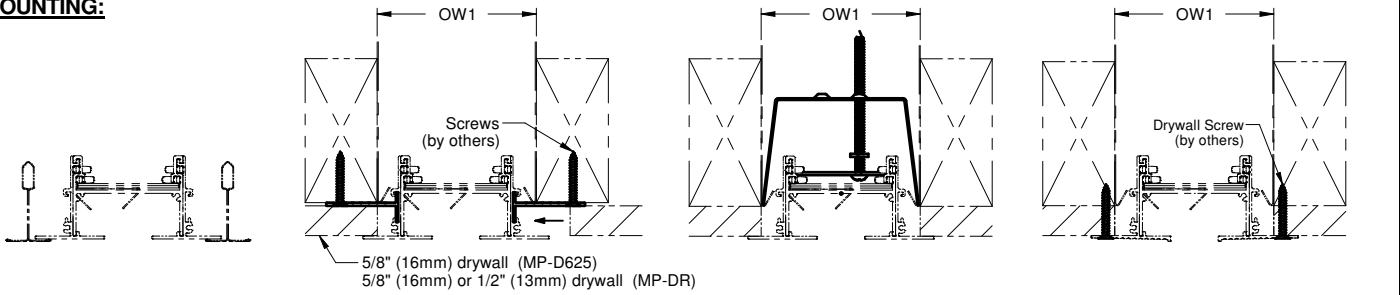

267996

CF
CUSTOM FLOW
LINEAR SLOT DIFFUSER

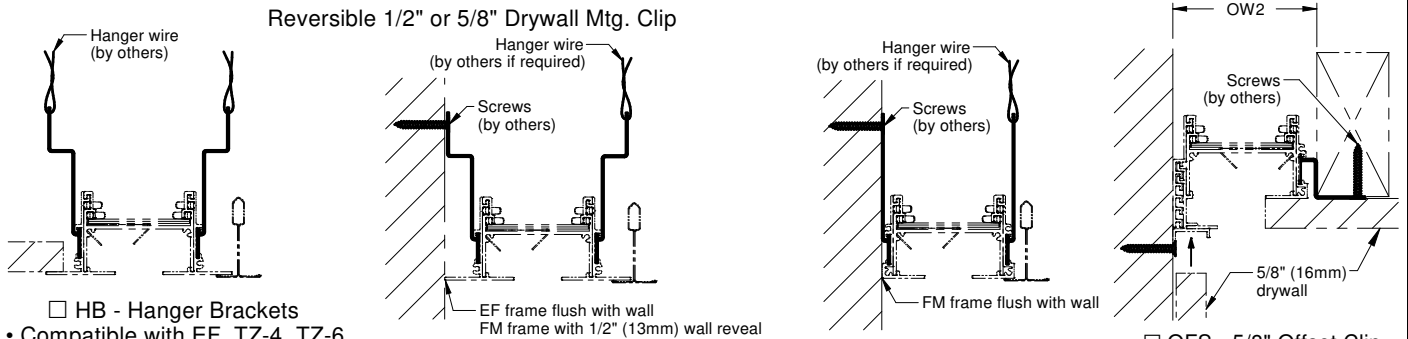
2023/09/12

CF - CUSTOM FLOW

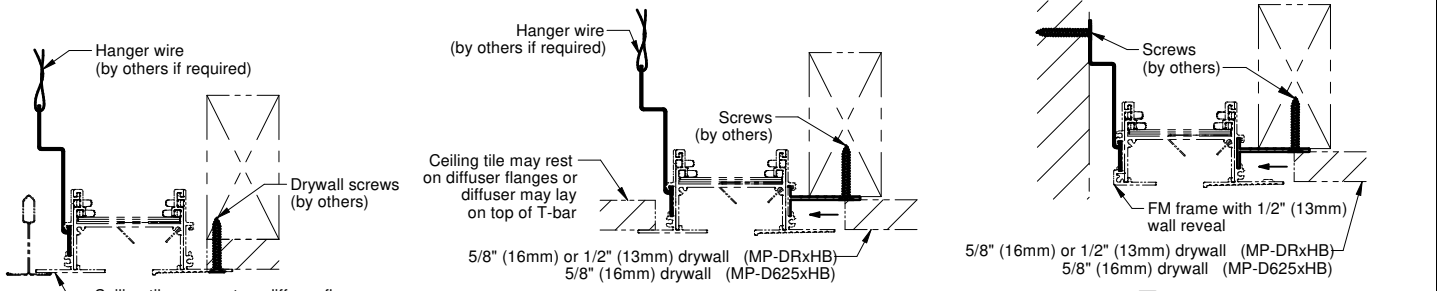
MOUNTING:



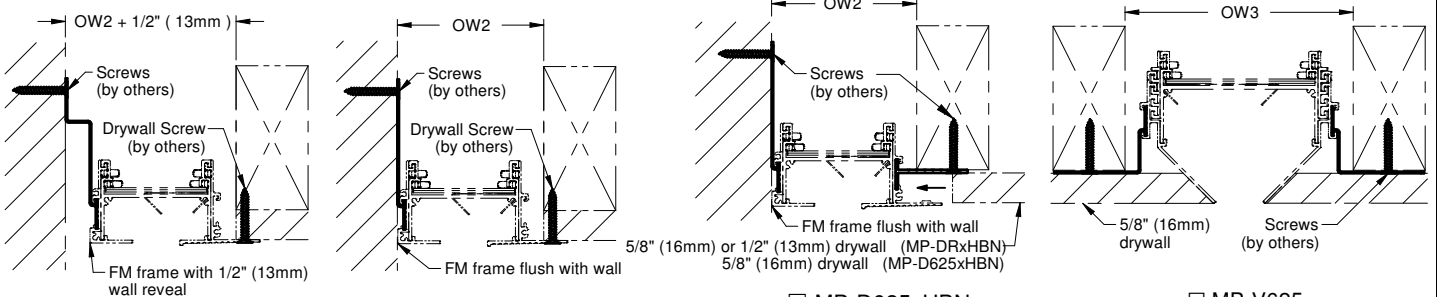
- NO-MOUNT
No mounting hardware
- MP-D625
Non-Rev. 5/8" Drywall Mtg. Clip
- C
Concealed Mounting Bracket
- A - Countersunk Holes



- HB - Hanger Brackets
 - Compatible with EF, TZ-4, TZ-6
- HBN - Hanger Brackets (Narrow)
- MP-DR
Reversible 1/2" or 5/8" Drywall Mtg. Clip
- HB - Perimeter Wall Brackets (Flush / Reveal)
- HBN - Perimeter Wall Brackets (Flush)
- OFS - 5/8" Offset Clip



- AxHB
Ceiling tile may rest on diffuser flanges or diffuser may lay on top of T-bar
- MP-D625xHB
- MP-DRxHB
- MP-D625xHBN
- MP-DRxHBN



- AxHB
- AxHBN
- MP-D625xHBN
- MP-DRxHBN
- MP-V625

ALL METRIC DIMENSIONS () ARE SOFT CONVERTED. IMPERIAL DIMENSIONS ARE CONVERTED TO METRIC AND ROUNDED TO THE NEAREST MILLIMETER.

PROJECT:		
ENGINEER:		
CUSTOMER:		<i>MG</i> 267996
SUBMITTAL DATE:		2023/09/12
SPEC. SYMBOL:		CF CUSTOM FLOW LINEAR SLOT DIFFUSER

CF - CUSTOM FLOW

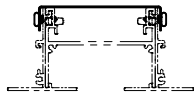
Slot Width	Slot Qty.	OW1 *	OW2 **	OW3
1" (25mm)	1	3 3/8" (86mm)	3 1/16" (78mm)	4 3/4" (121mm)
	2	5 11/16" (144mm)	5 3/8" (137mm)	-
1 1/2" (38mm)	1	4 3/8" (111mm)	4 1/16" (103mm)	4 3/4" (121mm)
	2	7 11/16" (195mm)	7 3/8" (187mm)	-
2" (51mm)	1	5 3/8" (137mm)	5 1/16" (129mm)	5 3/4" (146mm)
	2	9 11/16" (246mm)	9 3/8" (238mm)	-
2 1/2" (64mm)	1	6 3/8" (162mm)	6 1/16" (154mm)	5 3/4" (146mm)
	2	11 11/16" (297mm)	11 3/8" (289mm)	-
3" (76mm)	1	7 3/8" (187mm)	7 1/16" (179mm)	6 3/4" (171mm)
	2	13 11/16" (348mm)	13 3/8" (340mm)	-

* Opening width is outside dimension of field built plenum with hemmed edges. If no plenum is used, opening width may be additionally reduced by up to 1/4" (6mm).

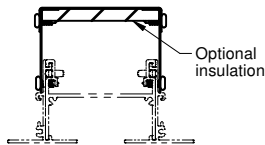
** Add an extra 1/2" (13mm) to opening width if hanger brackets for 1/2" wall reveal applications are used.

ACCESSORIES:

- Identical length to diffuser
- To be field trimmed and installed



MBL - Metal Blank Off



RBL - Return Baffle

RBL-CF - Return Baffle (Insulated) with coated fiberglass

- Only available with RT

NOTES:

- Minimum length 12" (305mm)
- Sizes over maximum section length will be provided in multiple sections
- For installation instructions, instructions for drywall finishing, or instructions for field trimming, please see CF installation manual
- Taping and plaster finishing by others
- For field cut packs, see CFK model
- Field trimming not recommended for X ends
- Replacement parts can be ordered through CFK or GRD-PARTS models
- For use with model CFP, UP, and UPL plenums
- Only compatible with model MC-CF mitered corner modules
- Factory tolerance +/- 1/32" (1mm)

ALL METRIC DIMENSIONS () ARE SOFT CONVERTED. IMPERIAL DIMENSIONS ARE CONVERTED TO METRIC AND ROUNDED TO THE NEAREST MILLIMETER.

Mounting Option Availability

	SM					LI						CMF-EF	FM-EF	FM-CMF
	CMF	EF	FM	OFS	VF	EF	FM	TG916	TG1516	TZ-4	TZ-6			
NO-MOUNT						•	•	•	•	•	•			
MP-D625	•	•	•											
MP-DR	•	•	•											
C	○	•												
A	•													
HB						•	•			•	•		•	
HBN							•	•	•				•	
OFS				•										
MP-V625					•									
MP-DRxHB												•	•	•
MP-D625xHB												•	•	•
AxHB												•		•
AxHBN														•
MP-DRxHBN													•	•
MP-D625xHBN													•	•

• Available

○ Available, but not recommended

MATERIAL:

- Extruded aluminum frame, spacers, and drywall mounting clips
- Aluminum W end caps are supplied with PA, 66, CLR, anodized and wood grain finishes
- Steel W end caps are supplied with other finishes
- Steel pattern controllers, Z endcaps, return baffles, and metal blank offs
- Coated steel fasteners, concealed mounting brackets, hanger brackets, offset clips, and VF mounting clips
- Plastic locking pins

CONSTRUCTION:

- STANDARD
- MRI - Aluminum pattern controllers, endcaps, and hardware for MRI applications
 - EF, CMF only
 - NO-MOUNT, MP-DR, MP-D625 only

PROJECT:

ENGINEER:

CUSTOMER:

SUBMITTAL DATE:

SPEC. SYMBOL:

PRICE	
<i>MG</i>	CF
267996	CUSTOM FLOW LINEAR SLOT DIFFUSER
2023/09/12	

CF - CUSTOM FLOW

FINISH:

• Diffuser face:

Standard Finishes:

- B12 - Standard white
- PA - Prepared and washed aluminum

Optional Finishes Available:

- Optional colors
- Custom colors
- Anodized
- Woodgrain patterns
- Armstrong coordinated finishes
- See finishes brochure for additional information. Contact your PRICE representative for leadtimes and pricing.

- CMF outer frames are supplied with a PA finish. On 2 slot variations, only center tee will be painted.
- VF frames are supplied with a PA finish
- OFS frame is supplied as B17 black

- Interior surface:
 - NO-BFR - Upper frame to match diffuser face (JS)
 - BFR - B17 black upper frame stack (AS, RT)

- Z endcaps:
 - B17 black (For most frames)
 - Endcap matches diffuser face finish (For TG916, TG1516, TZ-4 and TZ-6)

- Pattern controllers - B17 black
- Return baffle - B17 black
- Metal blank off - B17 black



Scan for link to additional product information and installation instructions.

ALL METRIC DIMENSIONS () ARE SOFT CONVERTED. IMPERIAL DIMENSIONS ARE CONVERTED TO METRIC AND ROUNDED TO THE NEAREST MILLIMETER.

PROJECT:		PRICE [®]	
ENGINEER:		<i>MG</i>	CF CUSTOM FLOW LINEAR SLOT DIFFUSER
CUSTOMER:		267996	
SUBMITTAL DATE:	SPEC. SYMBOL:	2023/09/12	